

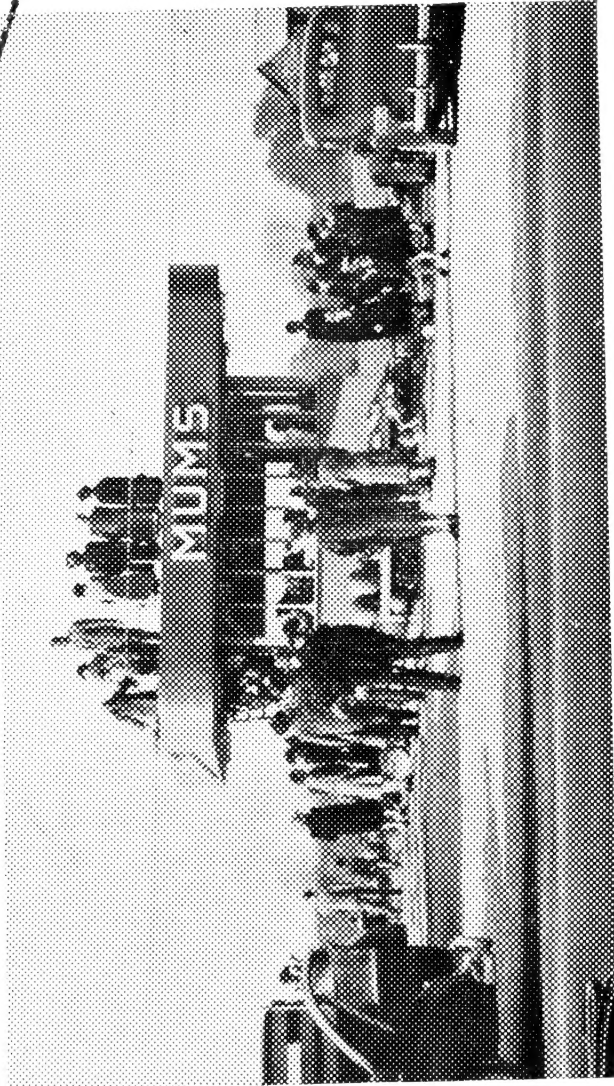
Historic, Archive Document

Do not assume content reflects current scientific knowledge, policies, or practices.

62,93

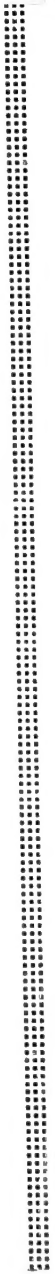
May 10 1946

MUMS...



By Farm of **PASCHKE**

North East, Penna.



To

for

use

U. S. DEPARTMENT OF AGRICULTURE
OFFICIAL BUSINESS

PENALTY FOR PRIVATE USE TO AVOID
PAYMENT OF POSTAGE, \$300
GPO

LIBRARY

U. S. Department of Agriculture

Washington 25, D. C.

52

GARDEN MUMS

Wholesale List 1946

Name	Description	Plants	Date	Price per 100
HARBINGER	—Good early yellow	-----F. D.	Sept. 1	5.00
MILKY WAY	—Beautiful cream. Different	---F. D.	Sept. 10	4.00
WM. LONGLAND	—Tall, bronze yellow. Good.	-----R. C.	Sept. 10	5.00
AMBER-GLOW	—A beauty anyplace, large.	R. C.	Sept. 10	10.00
SUN-RED	—Brazil Red	-----F. D.	Sept. 10	4.00
BARBARA SMALL	—Wonderful new pink	----R. C.	Sept. 10	8.00
POLAR ICE	—Chicago strain pure white. Cuts or garden	-----R. C.	Sept. 20	10.00
CHIPPEWA	—Good, tall, pink, showy.	----R. C.	Sept. 20	10.00
EGG-SHELL	—New, tall, strong grower, fine.	F. D.	Oct. 5	4.00
RAPTURE	—Color blending on red.	-----R. C.	Oct. 10	8.00
RED RIDING HOOD	—Bright red, strong grower. er. Fine for cuts.	-----R. C.	Oct. 10	8.00
ORCHID SPOON	—A beauty. Very popular	F. D.	Oct. 15	4.00
YELLOW CACTUS	—Large yellow cactus flower.	-----R. C.	Oct. 15	5.00
YELLOW SPOON	—Very showy, fine for cuts.	F. D.	Oct. 15	4.00
RED VELVET	—Deep wine red. Nice foliage	R. C.	Oct. 15	5.00
OCONTO	—Largest, showiest white. Tall.	---R. C.	Oct. 25	5.00
LUCIFER	—Deep shaggy red. Tall.	-----R. C.	Oct. 25	8.00
MRS. SAM ROTAN	—Yellow-orange. Large full blooms.	-----R. C.	Oct. 25	4.00
BOSTON-BRONZE	—Bright incurved. Large. Frost resistant	-----R. C.	Oct. 25	4.00
RED-DOTY	—Most popular late red. Hardy	---F. D.	Oct. 25	4.00



Shirley Paschke in the Mums

MEMBER PENNSYLVANIA NURSERYMEN'S ASSOCIATION

Outstanding Varieties

- AVALANCHE**—Sept. 15. Very large 3½" beauty. White with cream center. Field divisions. \$ 7.00 per C.
- MRS. P. S. DUPONT III**—Oct. 10. Soft peachy bronze. Fine growing plant. Different. Lovely. F. D. \$ 5.00 per C.
- GOLD TREASURE**—Oct. 10. Deep golden yellow, full double, fine for cuts with good stems. One of the very best. New. R. C. \$ 8.00 per C.
- JEWELRY**—Oct. 25. At last a better Jewell. Strong grower. Very hardy. A perfect pompon, holds its color well even after several frosts. Deep rose. It can't be beat. You must get this one. R. C. and F. D. \$ 6.00 per C.
- MAJOR**—Sept. 20. A real Major. Out in front as the best pink cushion to date. Wonderful deep pink flowers on perfect shaped plants of rare beauty. R. C. \$ 6.00 per C.
- NEW PHILADELPHIA**—Oct. 20. A beautiful shade of rich wine red, pompon type measuring 3". Splendid plant grower, large heavy leaves. F. D. \$ 4.00 per C.
- OLD GOLD**—Oct. 25. A tall old-gold pompon perfect for cuts. A rare beauty. Different. R. C. \$ 6.00 per C.
- OLIVE LONGLAND**—Sept. 20. NEW Chicago strain. One of the loveliest. Large apricot toned salmon-pink. R. C. \$15.00 per C.
- ROSE QUILLED**—Oct. 15. A spoon type and much superior to Rose Spoon. 3½" full flower. Quilled petal silver pink outside, deep rose inside. Tall. F. D. \$ 4.00 per C.
- SCARLET-CRIMSON**—Sept. 15. This the finest red cushion we have found. It has everything: Early, hardy, good grower, bright in color, long lasting. It is the one we had been looking for! R. C. \$ 6.00 per C.
- STALWART**—Oct. 1. NEW. Chicago strain. Old-gold pompon, resembling J. Anderson in flower and plant. A real commercial variety for pots, borders or for cuts. R. C. \$10.00 per C.
- SUN GOLD**—Oct. 25. Here is a tall shaggy incurved yellow. Rich heavy foliage. The largest hardy mum. Very unusual. F. D. \$ 5.00 per C.
- WHITE CUSHION**—Oct. 1. NEW. One of our seedlings. It is the finest white cushion we have found. It sells as well as Avalanche here. Practically pure white. F. D. \$ 8.00 per 100

POMPONS

Name	Description	Plants	Date	Price per 100
PURPLE STAR	—Very attractive.	-----R. C.	Sept. 1	\$ 8.00
RED GOLD	—Bright rich red, fine for cuts.	--R. C.	Sept. 10	8.00
BAMBI	—New Chicago strain. Fawn yellow.	--R. C.	Sept. 15	10.00
SEPT. BRONZE	—Golden bronze. Lasting.	---F. D.	Sept. 15	4.00
BONFIRE	—Fine hardy red for cutting or gardens.	-----R. C.	Sept. 20	8.00
RUBY POMPON	—Crimson. Stiff stems.	----R. C.	Sept. 15	4.00
SEPT. CLOUD	—White with primrose center. Good.	-----F. D.	Sept. 20	4.00
LAVENDER LASSIE	—A beauty in the cushion type.	-----R. C.	Sept. 25	8.00
REMBRANDT	—Rose mauve, blend of copper	F. D.	Oct. 1	8.00
MANDALAY	—Orange-bronze. Fine grower cuts.	-----R. C.	Oct. 1	5.00
PURPLE JEWELL	—The best Jewell.	-----R. C.	Oct. 15	10.00
J. ANDERSON	—Yellow button. Nice.	----R. C.	Oct. 15	8.00
ROSE CHARM	—Pretty rose. Nice for cuts.	R. C.	Oct. 20	4.00
GOBLIN	—Best bronze for Halloween.	----F. D.	Oct. 20	4.00
BABY MARGARET	—Small yellow button.	---F. D.	Oct. 20	4.00
WHITE DOTY	—Lovely white. Tall. Cuts.	---F. D.	Oct. 25	4.00
MARY L. HALL	—Fine yellow, hardy here.	---F. D.	Nov. 1	4.00

CUSHIONS

Name	Description	Plants	Date	Price per 100
PIPESTONE	—Handsome blending colors.	---R. C.	Aug. 25	\$ 5.00
HARMONY	—Combination of colors	-----R. C.	Sept. 1	4.00
RED-WOOD	—NEW, Attractive rust red.	---R. C.	Sept. 5	8.00
DAHLIA-MUM	—Deep wine red.	-----F. D.	Sept. 15	4.00
MEADOW-GOLD	—NEW. Very showy yellow.	-----R. C.	Sept. 15	10.00
LAV. LASSIE	—Same color as Lav. Lady.	----R. C.	Sept. 25	8.00
ROBT. BRYDON	—Dark garnet red.	-----R. C.	Oct. 1	6.00
AUTUMN-LIGHTS	—The best rust. A beauty.	F. D.	Oct. 5	4.00
COMMANDER	—Bright showy red, yellow center. Strong grower	-----R. C.	Oct. 5	4.00
CHAMPION	—Reddish deep bronze.	-----R. C.	Oct. 5	4.00

SINGLES

Name	Description	Plants	Date	Price per 100
WATER LILY	—New. White.	-----F. D.	Aug. 25	\$ 4.00
NORTH STAR	—New. White.	-----F. D.	Sept. 20	4.00
DUBONNET	—Large. Pink.	-----R. C.	Oct. 1	6.00
ALEGRO	—Large. Pink.	-----R. C.	Oct. 1	6.00

ENGLISH VARIETIES

We have had them for several years. Some do well, some look promising, some are failures. The following we offer and have done well here.

LEDA—Pink to lavender, strong grown.	\$ 6.00 per C.
GOLD STANDARD—Large showy yellow.	\$10.00 per C.
TIGER—Red with changing color.	\$15.00 per C.

We sell rooted cuttings (R. C.) in some varieties, field divisions (F. D.) in the rest. Have both in some varieties. Field Divisions are shipped as soon as they are large enough.

Order 50 of a variety, priced \$5.00 per C. or less. Order 25 of a variety priced above \$5.00 per C. When making out your order, it is advisable to allow us to substitute a variety of equal or better quality. You must state specifically, however, if you wish us to do this, in case we are out of a certain variety.

Cash with order. 10% discount on \$50.00 orders. We send by express collect: usual trade conditions. We will try in every way possible to please you, but not responsible for things beyond our control.

WE HAVE THE BEST VARIETY LIST; BEST OF THE OLD AND FINEST OF THE NEW. WE DISCARD MANY VARIETIES EACH YEAR.

We have discarded the following varieties: Adironda, Aglow, Acacia, Algonquin, Arab, Astrid, L'Argentuillais, Little-Bob, Muskogee, Nancy Copeland, Pomponette, Pohatcong, Clara-Curtis, Crimson Glory, Dean-Kay, Indian-Summer, Jean Cummings, Mandarin, Pale Moon, The Moor, Vivid, A. S. Clark, Apollo, Daphne, Mars, Peachblow, Saladin, Vestia, Psyche, Sappho, Golden-Spoon, Sandra, Country-Girl, Pink Cushion, Niobe, Alladin, Sequois, Warrior, Edgar-Guest, Rose Spoon, Jasper Spoon, Ember, Sept. Gold, Ouray, Marjory Mills, Flavita, Crimson-Cushion-Deluxe.

